



Board of Directors

KARL J. VELD KAMP CHAIR
MIKE DEBOERSAP TREASURER
MARISE VELD MAN SECRETARY
REV. WINSTON BOSCH
ERICA FEUNEKES
RUTH GELMS
SONYA KAMPEN
HANNAH OLIJ
DUANE SWAVING
HOLLY VAN WEERDEN

EBF Committee

KONNIE PEET CHAIR
MIKE DEBOERSAP
SONYA KAMPEN
FILIPE LIMA
EMMA VAN BEEK

Western Representatives (Mufu Home)

DEANNA DE WIT
DARCIE DUKER

Faithworks Committee

KEVIN BUIKEMA
GRACE DETHAN
ALLARD DEVRIES
TOM LODDER
JOYCE OLIJ
TIM PLANTINGA
CASSANDRA SCHOUTEN
DUANE SWAVING
GEORGE VANDENBERG
JANELLE VANHALTEREN
JOCELYN WANDERS

Board of Mission Aid – Smithville

WINNIE BOS
TAMMY BLOKHUIS
WALTER FEENSTRA
MICHELLE SCHULENBERG
FELICIA VANDERVELDE

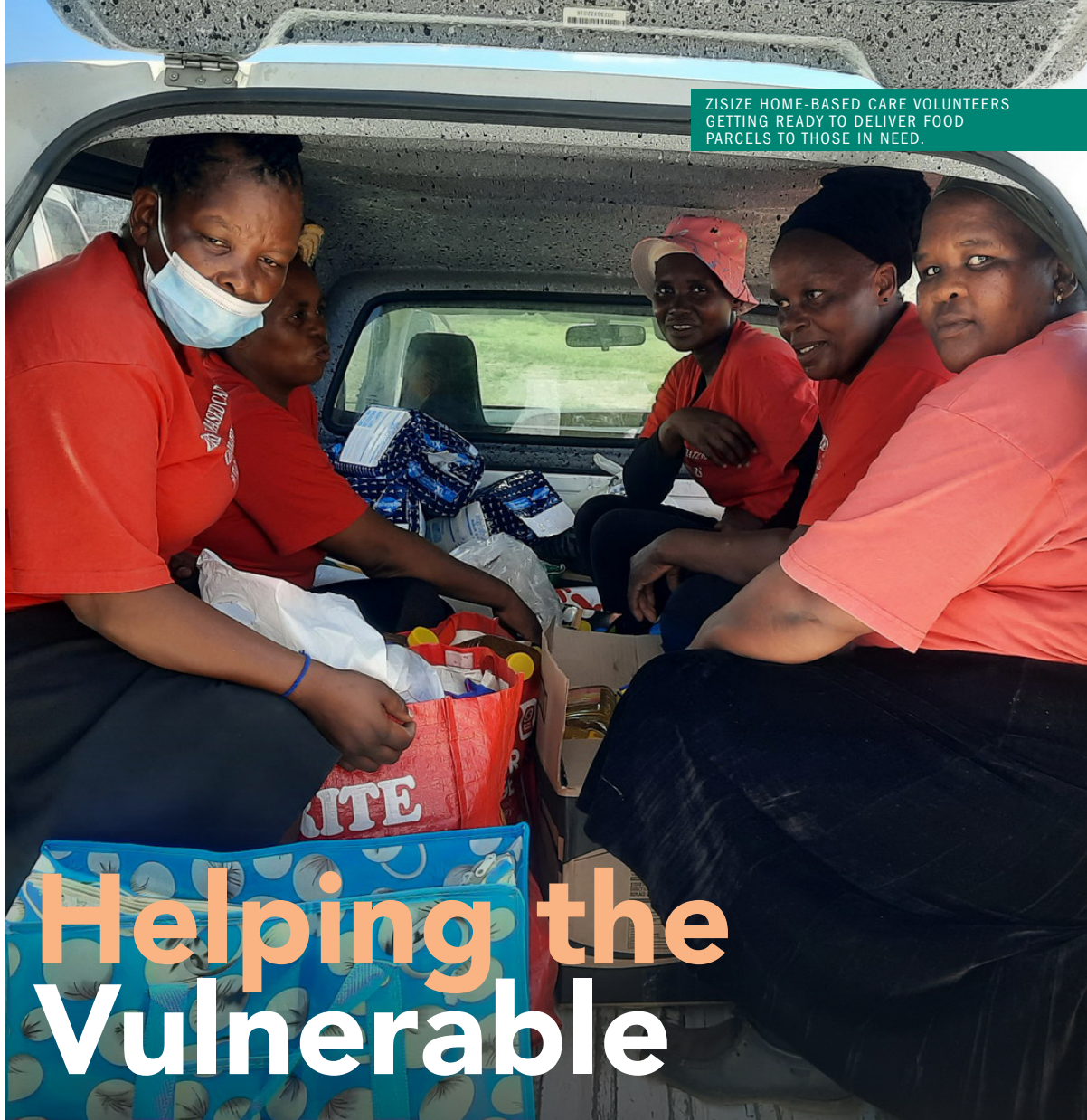
Staff

SUE JAGT
SARA KINGMA

Contact Us

ADMIN@CRWRF.CA
P.O. Box 62054
Burlington, ON L7R 4K2

We have a
NEW
P.O. Box!



ZISIZE HOME-BASED CARE VOLUNTEERS GETTING READY TO DELIVER FOOD PARCELS TO THOSE IN NEED.

Helping the Vulnerable

Throughout the Old Testament, our God, the Father of mercies and God of all comfort made it clear that he desires for his people to look after the widowed, the fatherless, the sojourner, and the poor (e.g., Deut. 24:19-22, Isa. 1:17, Jer. 22:3, Zech. 7:10). When the Lord Jesus lived on earth, his actions demonstrated over and over that he is gentle, lowly, compassionate, and love incarnate. Many accounts throughout the gospels reveal that Christ sought out those who were vulnerable, marginalized, or outcast from their community, to heal them, forgive them, and restore them.

In living out our faith today, we can express our thankfulness to God for his many lavish gifts towards us by humbly and joyfully showing generosity and kindness to those in need, in particular to those who are vulnerable and marginalized.

When selecting and evaluating partner organizations, CRWRF seeks projects that promote community-wide benefits, with special concern for the most vulnerable and needy groups in the community. Our partners tend to have standard vulnerability criteria by which they can identify and select participants in their programming. People could be deemed economically vulnerable, socially (e.g., women, children, and the stigmatized, disabled, or illiterate), environmentally (e.g. proximity to coastline), or physically vulnerable (e.g., poor housing, dense populations).

CRWRF supports many development projects that have the vulnerable in mind. We work to improve the lives of orphans and

...continued on page 2

“
Father of the fatherless
and protector of widows is
God in his holy habitation.
”

PSALM 68:5

continued from page 1...

vulnerable children in Senegal and provide shelter and education to children in Kenya and West Timor. Further on in this newsletter, you'll be able to read updates about three more projects with similar objectives: providing nutritional and medicinal care to acutely malnourished children in Liberia; providing home-based care to sick individuals and child-headed households in South Africa; and working for the flourishing of visually impaired students in Togo.

In situations requiring relief aid, vulnerable individuals or groups have limited ability to anticipate, cope with, resist, and recover from the event. If a similar crisis event happened in your community, you might be able to bounce back quickly, but for these individuals or groups, their capacity to do so – often for reasons outside of themselves – is significantly reduced. We are thankful to report on two relief projects, in Lebanon and Ukraine, where the beneficiaries receive much-needed assistance for daily living.

Thank you for your generosity, which allows us to continue supporting development and relief projects that serve local communities and their most vulnerable community members. Please join us in praying for the staff of our partner organizations. Due to the extremely challenging contexts that these individuals are often in, the work can be heavy and draining. In reports we receive, our partners regularly express sincere appreciation for the support, and acknowledge that the need in their communities continues to be high. Please also join us in praying for the participants in the various projects. Through their participation, may they come to recognize that the world is not as it ought to be and that the God who made them is a father to the fatherless and a protector of widows. May they experience the help that we are able to provide as a way that believers in Christ – even from distant countries! – are sharing his love with them.



PATIENT AND MOTHER WHO RECEIVED MEDICINAL AND NUTRITIONAL CARE AT ELWA HOSPITAL.



MALNUTRITION WARD IN THE PEDIATRIC UNIT AT ELWA HOSPITAL.

Project Updates

Liberia

Pediatric Unit Support ELWA Hospital

It is a blessing to receive reports about the infants and children treated at ELWA Hospital Pediatric department, since children, especially when they are sick, are one of the most vulnerable groups in society. As the only hospital in Monrovia with a malnutrition program, it sees thousands of consultations and hundreds of admissions each month. The hospital was recently able to hire two additional doctors and a new physician's assistant to help manage this significant workload. We pray that they settle into their duties well and that the Lord blesses their efforts.

Due to the high demand in the community, the hospital was starting to run out of baby formula and had to turn away patients in need. After receiving a proposal from the staff at ELWA, the CRWRF Board has approved another agreement to provide further funding for this much-needed nourishment. We are thankful to be given another opportunity to serve this community and we pray that our heavenly Father will also bless this new project.



PARTICIPANTS OF MILK & DIAPERS PROGRAM.

Lebanon

Milk, Diapers and Feminine Pads, MERATH

Due to the ongoing political and socio-economic crisis in Lebanon, many households – including refugees from neighbouring countries – continue to struggle with meeting essential needs. According to one assessment, in 2023 three out of every four children under the age of five in Lebanon lived in food poverty. MERATH, our implementing partner, has an ongoing food assistance program that provides much-needed support to highly vulnerable households. Our support makes it possible for MERATH to augment their food assistance program by also providing powdered milk, diapers, and feminine hygiene pads. These items have become very expensive and difficult to obtain otherwise.

MERATH works through 14 local partner churches and one local NGO that collaborates with churches to meet the needs of vulnerable domestic workers. In this past reporting period, they served nearly 3,000 households (12,131 individuals) across four regions. When asked for feedback, several participants mentioned that this project helped them reduce their spending on milk, diapers, and feminine pads, allowing them to use their scarce resources for other necessities such as food and rent. This project has emerged as a vital lifeline for families affected by the ongoing crisis.

It has also played an important role in enhancing the outreach of local churches to meet basic needs, helping them to show compassion and hope to their neighbours facing intense economic hardship. As one partner explained, “The people we serve can’t even provide food for their children. Many families cannot buy milk for their young children, so they mix water with corn flour or bread instead. These families are not used to being taken care of with unconditional love. It makes a huge difference when we help them in a way that reflects the love Jesus showed us. It is amazing that people who are living very far away think about them and have on their heart to help them.”



ZISIZE HOME-BASED CARE VOLUNTEERS.

South Africa

Home-Based Care, Zisize

Many people who live in KwaZulu-Natal, South Africa daily experience the negative effects of unemployment, high rates of poverty, and drought. The long and sad history of high rates of HIV/AIDS has also severely affected individuals and families. Over the years, in many families, parents have passed away from the disease, forcing the children to look after themselves or depend on their grandparents who only receive a small government pension.

The food parcel distribution continues to be a vital part of the two home-based care projects that CRWRF supports through our local implementing partner Zisize. In the last reporting period, volunteers distributed nearly 1,000 basic food parcels to sick clients, many of them on chronic medication. They also distributed nearly 1,500 Parcels of Hope to orphaned children and child-headed households.

The Parcels of Hope are relatively larger food packages that include available fresh vegetables, often grown in Zisize or its workers’ gardens. The recipients of the food parcels tend to live in households that include 5 to 20 other individuals, which means that parcels continue to make a significant impact beyond just the immediate clientele. Zisize workers also do an annual door-to-door HIV/AIDS awareness campaign. We pray that the Lord will continue to bless the Zisize volunteers and cause the parcels and home visits to be a blessing to the recipients.

Did you Know?

CRWRF was established in 1965.

This means we will be celebrating our **60TH ANNIVERSARY** next year! Join us as we praise the Lord for his steadfast faithfulness over the decades. Stay tuned for details about celebration activities!



SLIDES FROM 1966 OF ONE OF OUR FIRST PROJECTS IN SOUTH KOREA

Togo

Lomé School for the Blind, CESA

Living with visual impairment is a struggle under the best of circumstances, let alone in Togo, a country that not only ranks among the world's poorest, but also attaches significant stigma to blindness. We are happy to announce a new project with the Lomé School for the Blind in Togo, Africa. This missional school teaches the visually impaired of all ages that they are image-bearers of God, it and gives them the skills needed to live productive lives. For the next two years, CRWRF will provide funding for staff salaries, specialized educational equipment, and student fees. We recently wrote a Clarion article featuring this new project if you'd like more information!



LEFT: MERCY, A CURRENT STUDENT. RIGHT: KOFFI (PRINCIPAL) WITH REBECCA (SECRETARY).



GROUP PHOTO OF STUDENTS AND STAFF AT THE LOMÉ SCHOOL FOR THE BLIND.

Ukraine

War Relief

CRWRF continues to provide support to partners who are involved in relief work in Ukraine. We recently sent additional support to Hungry for Life, a partner organization that we've worked with before. The local staff provide basic necessities for refugees and internally displaced persons in Ukraine, including food, mattresses, bedding, hygiene products, and shelter. Since the onset of the war, this organization has provided 5.2 million pounds in 1,100+ deliveries of food and hygiene supplies to needy families and households.

We are also supporting pastors in the work that they do, both in Ukraine (where they are subject to tough limitations), and in neighbouring Hungary, where they assist and support Ukrainian refugees and displaced individuals - all with the gospel in hand.



RELIEF ITEMS GETTING READY TO BE DISTRIBUTED BY HUNGRY FOR LIFE IN UKRAINE.



VARIOUS HEART WEEK EVENTS AT PICCS.

THANK YOU!

The Board of CRWRF would like to thank the community in Edmonton, AB heartily for all their hard work.

Early this year, Parkland Immanuel Christian School held their annual Heart Week fundraiser in support of Mufu Children's Rescue Centre in Kenya. The high school students were challenged to raise enough money for specific items: a water pump (\$600), a dairy cow (\$1,350), a biogas plant (\$1,800), and 16 cubicle doors (\$710). They succeeded! The entire community raised just over \$10,000 with their week full of activities and events. What a blessing this will be for the children in Kenya! If your school would like to host a fundraiser for one of our projects, please contact us for information on how to get started.

Learn about all the ways you can help at:

CRWRF.ca